

OUR NEW OFFICE AMSTERDAM



A blurred silhouette of a person walking in a bright, modern office space with large windows and wooden beams. The person is walking from left to right across the lower portion of the frame. The background is a large window with a wooden frame, showing a bright, overexposed outdoor scene. The overall atmosphere is clean, bright, and professional.

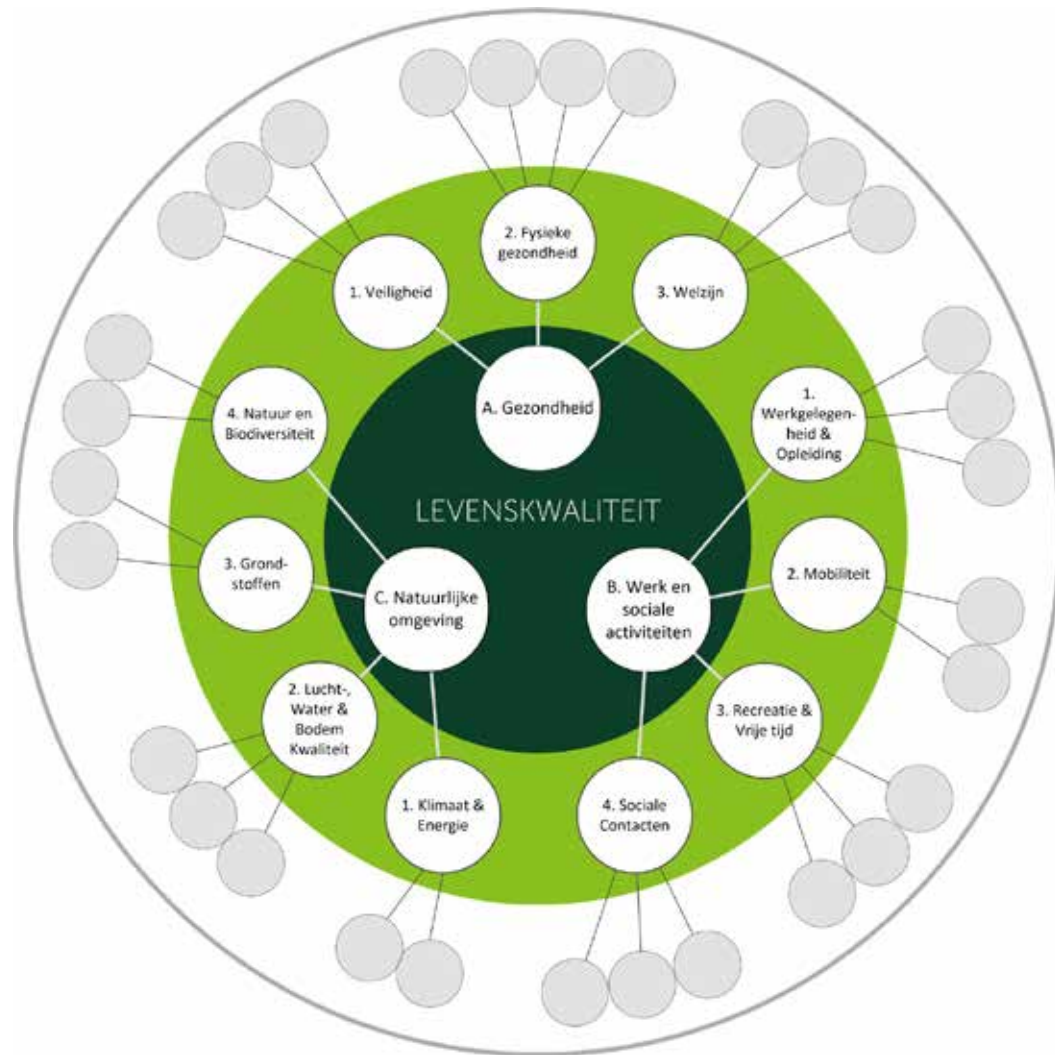
**YES WE CAN.
THE FIRST LOW-TECH
OFFICE IN THE
NETHERLANDS.**



Kenneth Frampton

Mechanical and electrical systems have come to consume an ever growing proportion of typical building costs over the last century, leaving budgets for anything remotely 'architectural' increasingly short changed.

DE MENS CENTRAAL



LEVENSKWALITEIT-MODEL
ECONOOM EN NOBELPRIJSWINNAAR JOSEPH STIGLITZ



GEZONDE WERKOMGEVING
NATUURLIJK BINNENKLIMAAT
SOCIALE CONDENSOR

PARIS PROOF COMMITMENT FOR A SUSTAINABLE BUILDING INDUSTRY

Source:
d gbc.foleon.com/paris-proof
Alba Paper 'Bouwen binnen CO2 budget'

Global budget



1.5 ~~400 Gt~~

1.5 320 Gt

Netherlands



~~909 Mt~~

Assigned by population
number

712 Mt

Building industry (total)



~~100 Mt~~

Building materials industry
(incl. GWW) is 11% of
national emissions

78 Mt

New construction



~~22 Mt~~

Building materials for exclusively
new construction is 2.5% of
national emissions

18 Mt

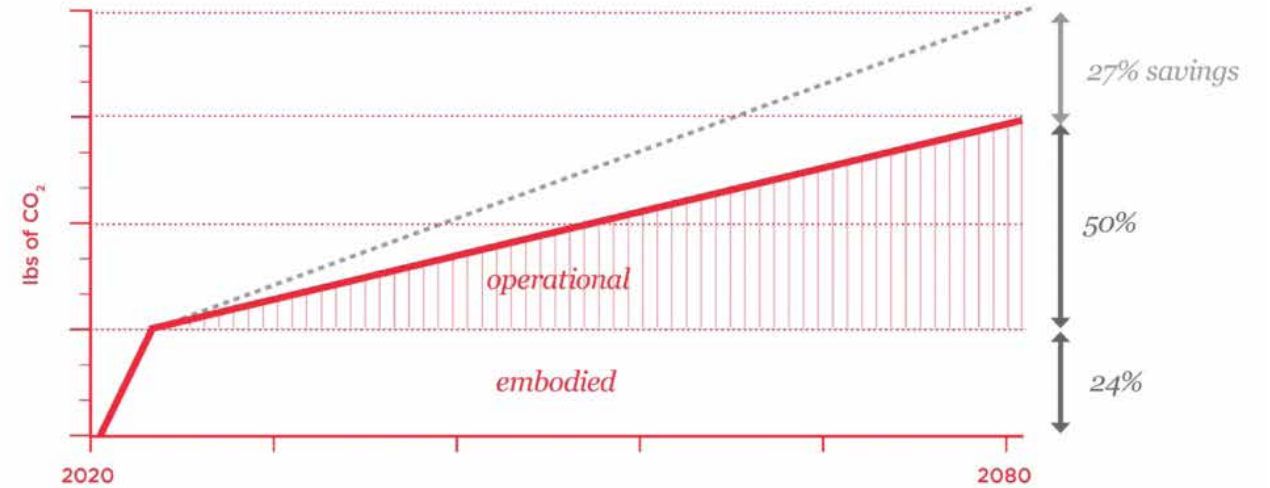
READY MADE



2226 - LUSTENAU, OOSTENRIJK
BAUMSCHLAGER EBERLE ARCHITECTEN
2018 / 2421 M2

GWG - TUBINGEN, DUITSLAND
VON-M
2024 / 2.300 M2

LESS IS REAL

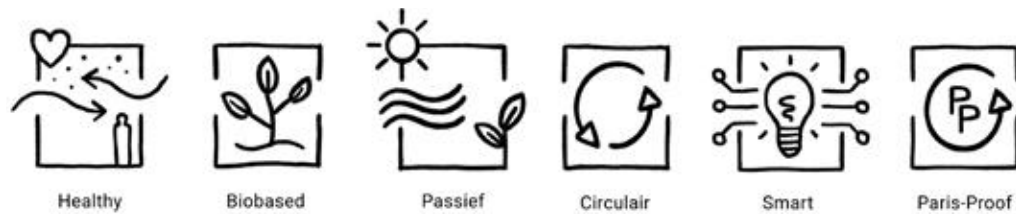


Passief gebouw < 15 kWh/m² per jaar.

Energievraag Passief < 120 kWh/m² per jaar.

Materiaalgebonden < 158 kg CO₂-eq per m²
(>COP 2030).

Paris Proof grenswaarde: 220 kg CO₂-eq per m²



**OUR NEW ●
OFFICE**

De Ceuve
Noorderpark

Winkelcentrum
Mosplein

A M S T E R D A M
N O O R D

Eye Film Museum
A'DAM tower



Amsterdam
Centraal Station

Muziekgebouw
aan 't IJ

POST INDUSTRIAL



WE LOVE AMSTERDAM NOORD



MIXED ENVIRONMENT

OUR NEW
OFFICE



OUR NEW OFFICE



PROGRAM

LOW-TECH & BIOBASED OFFICE

4.590 M² GFA TOTAL

STATUS

IN DEVELOPMENT

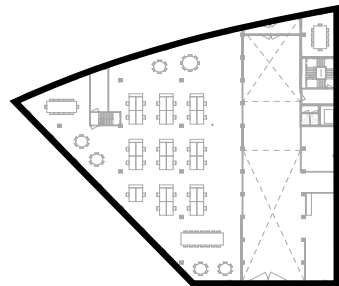
IN COLLABORATION WITH

SYNCHROON, AVECO DE BONDT, SOLID TIMBER



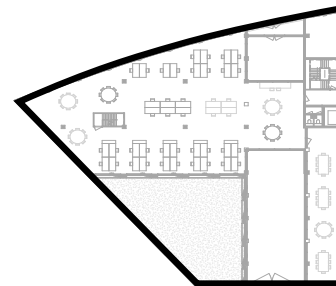
COMPACT OFFICE

Ground floor



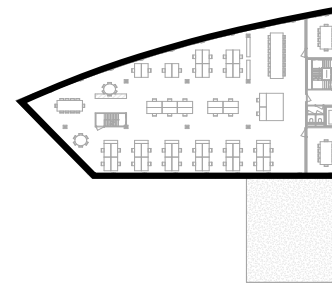
945 m²

1st floor



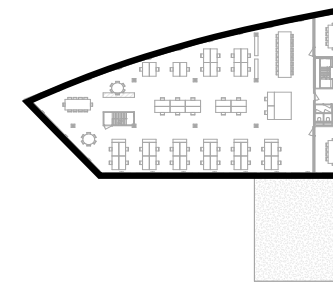
605 m²

2nd floor



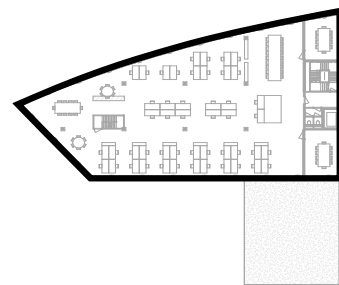
608 m²

3rd floor



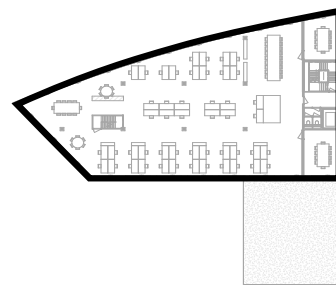
608 m²

4th floor



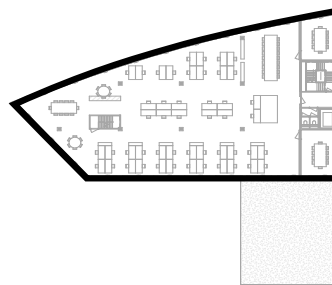
608 m²

5th floor



608 m²

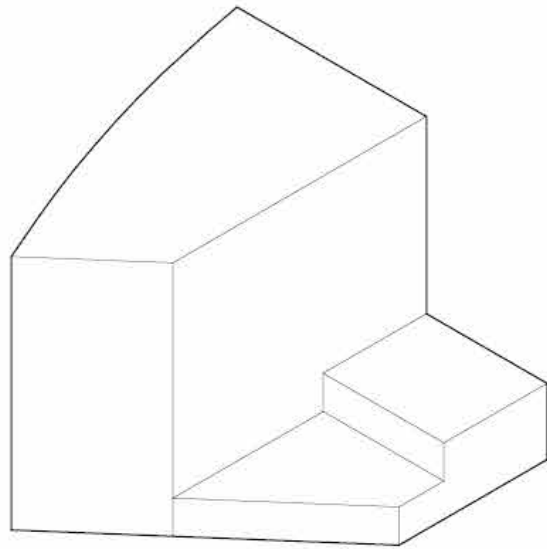
6th floor



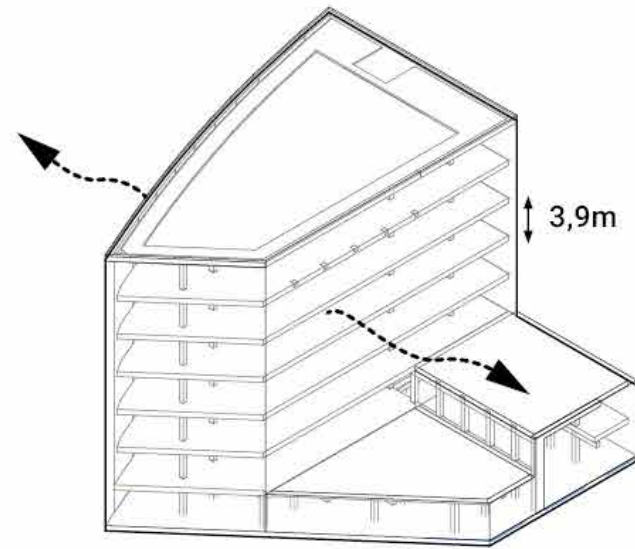
608 m²



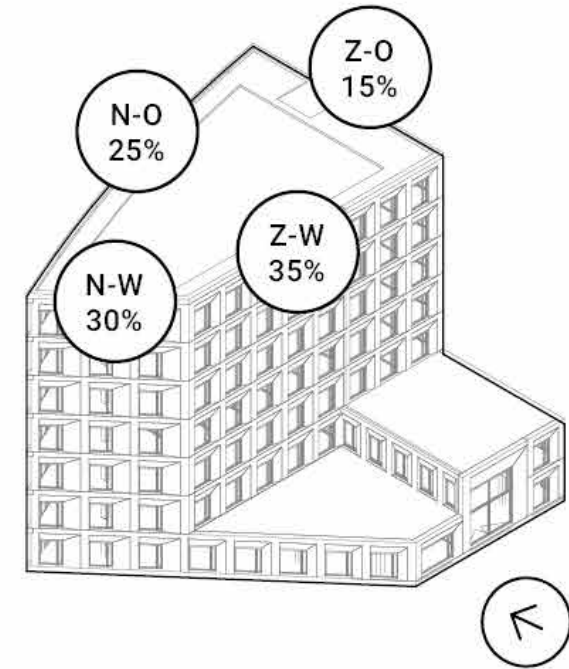
PERMEABLE FACADE



Compact shape



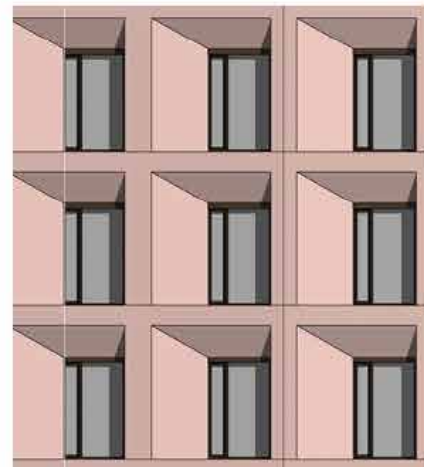
High and open



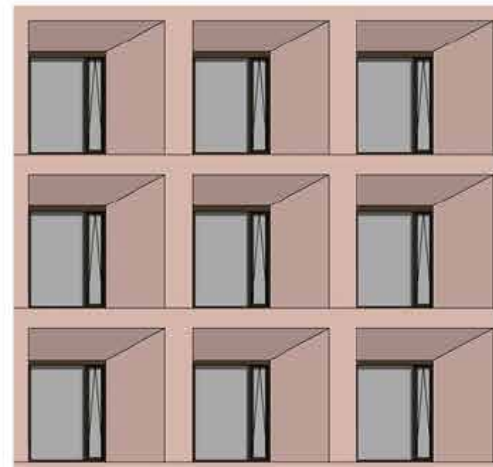
Orientation dictates opening %



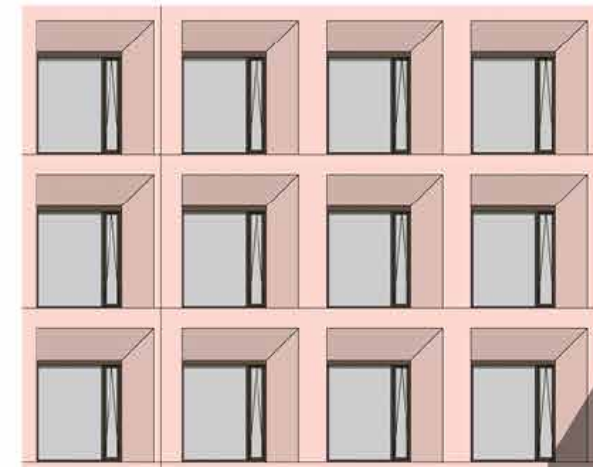
15% open



25% open



30% open



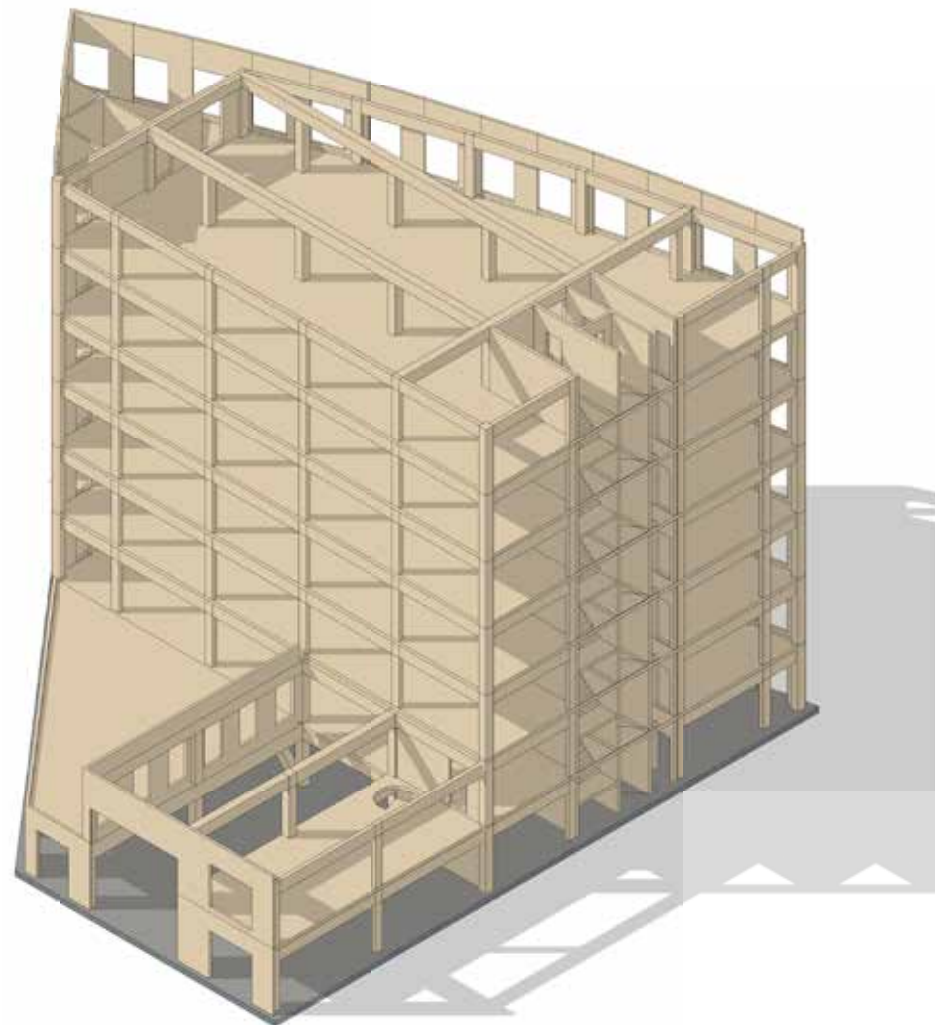
35% open

4 M HIGH FLOORS



CO² STORED

1.188.523 KG



Wood volume of used products:
1.909 m³



European forests store this amount of CO₂ in:
88 seconds

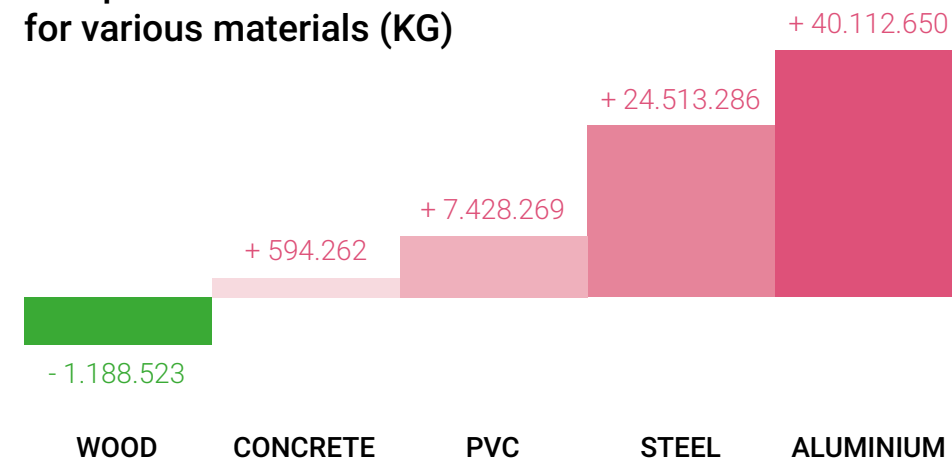


Equivalent to the exhaust emissions of a
mid-size car over 10.072.229 km

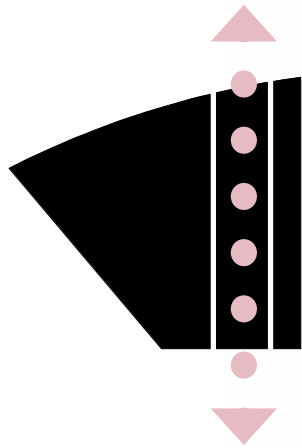


Electricity consumption of 1.321 house-
holds in one year

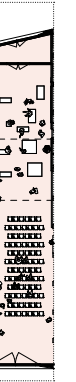
Comparison of net emissions of CO₂
for various materials (KG)



MAINSTREET



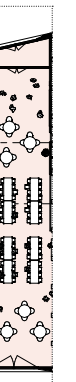
OPSTELLING THEATER/LEZINGEN



OPSTELLING EXPOSITIE

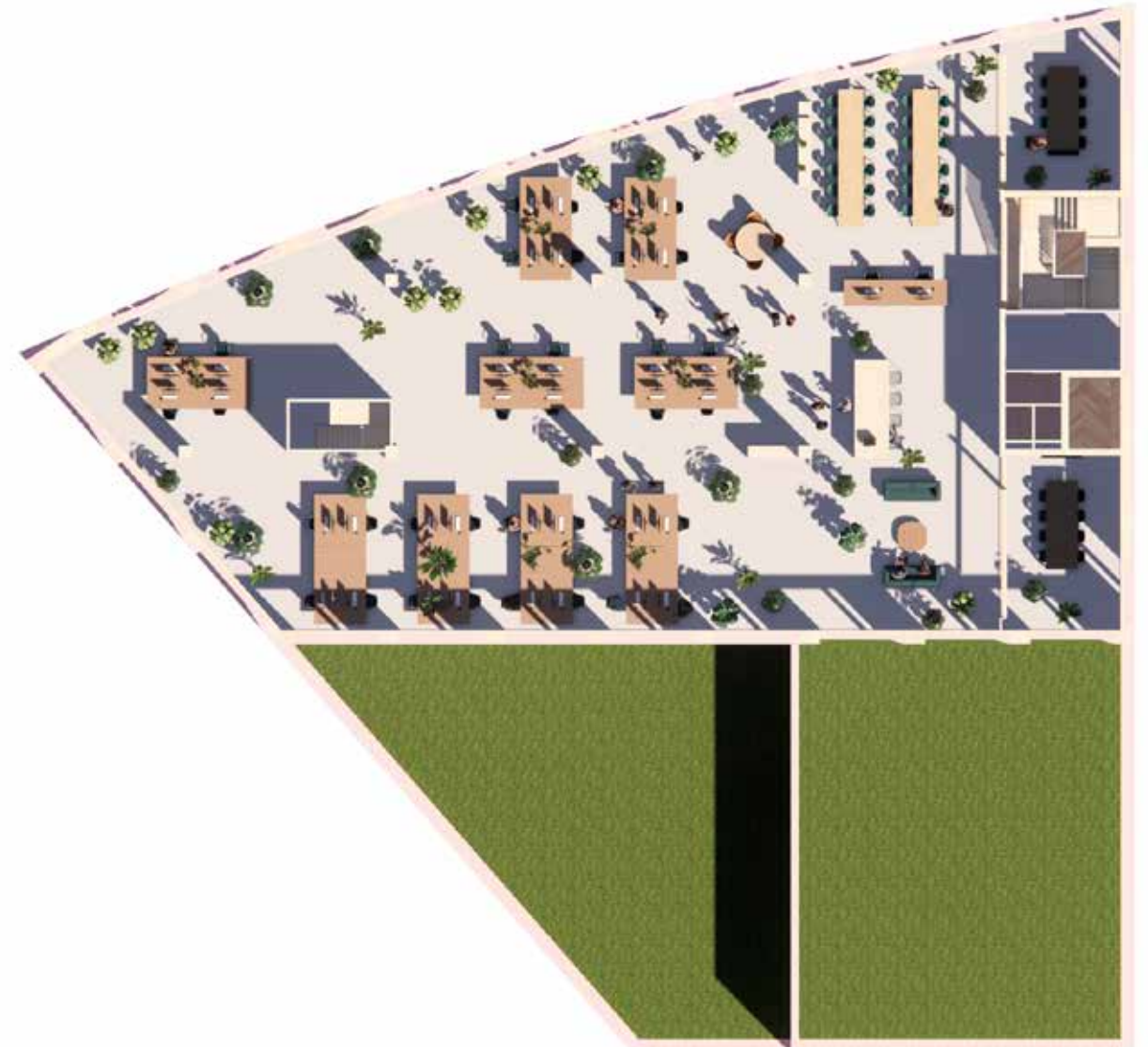


OPSTELLING LUNCH





HOW WE WORK



VENTILATION





hemp-chalc blocks

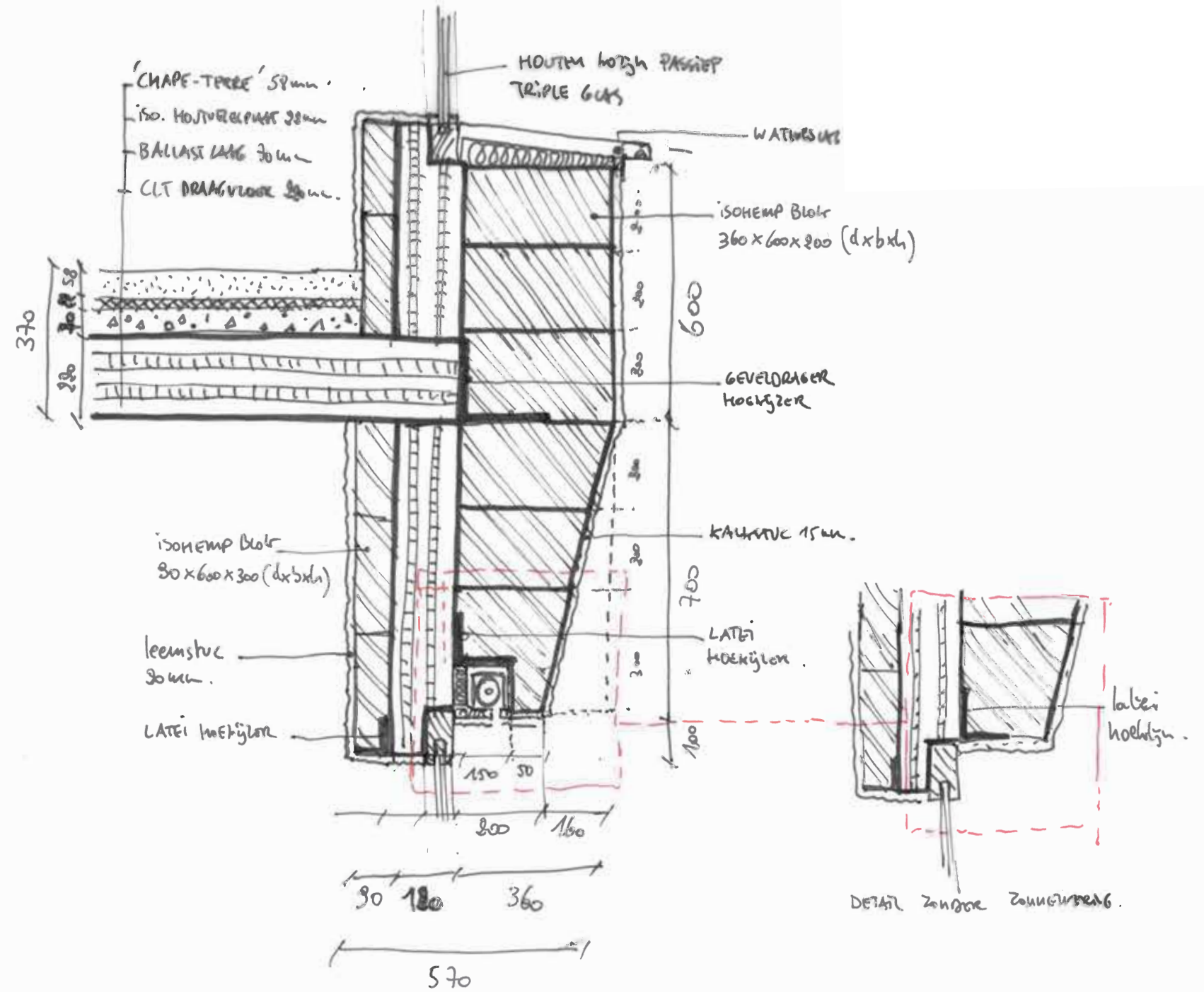


leem plaster



cast leem floor

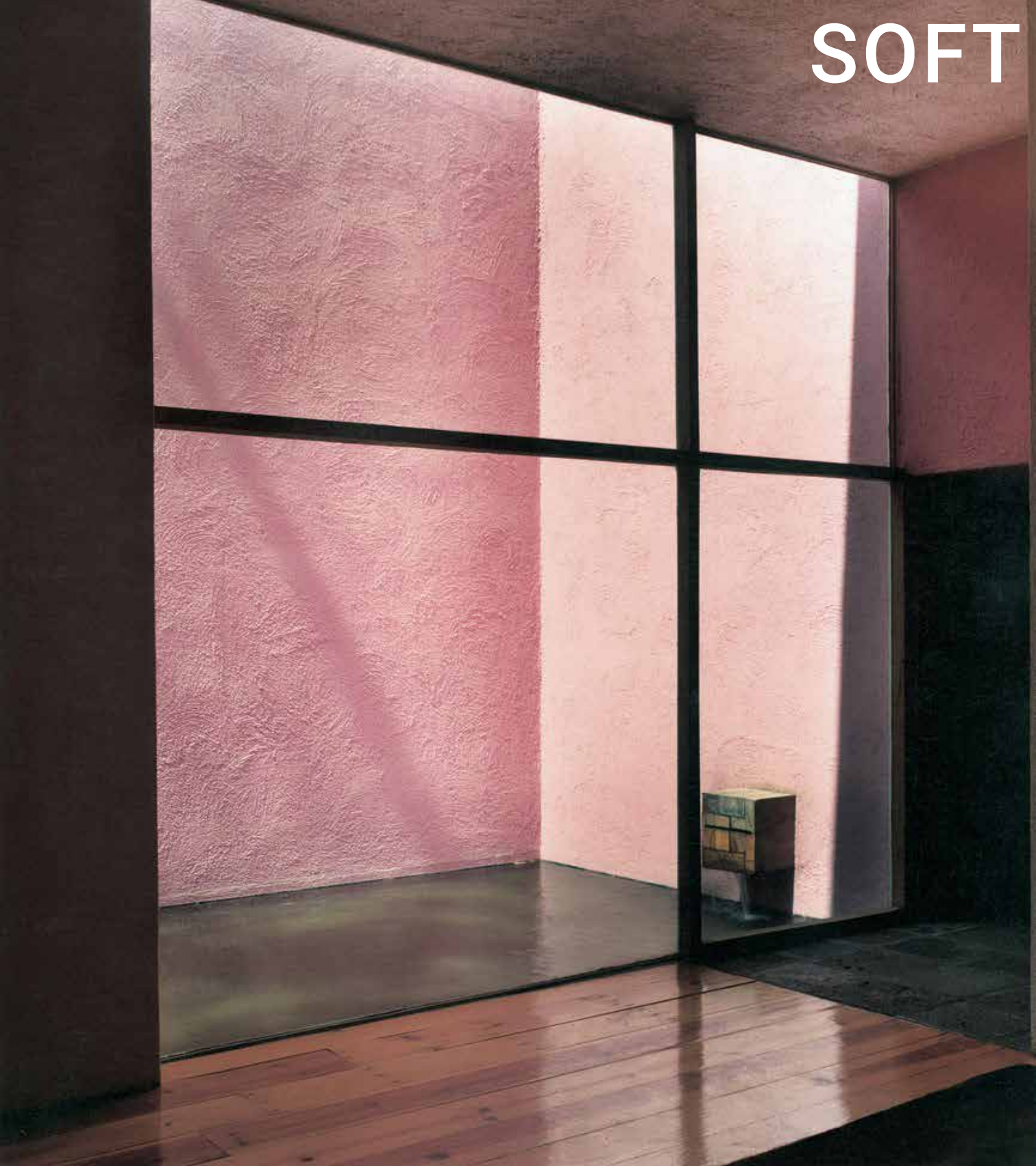
HOW WE MAKE IT



CRAFTSMANSHIP



SOFT SOLID





**THERE ARE
SIMPLY JUST NOT
ENOUGH PINK
BUILDINGS**

OZ

www.OZarchitect.nl